



Kerry Court

Stanmore

£1,850 Per month

Davidson Frost-Wellings are pleased to present this nicely presented two bedroom, ground floor flat opposite Stanmore Station. This property benefits from parking at the rear, separate kitchen, reception room and a modern bathroom. Available end January.

Harrow Council Tax Band D

Deposit of £2,134.61 based on the asking price

Available 1st February

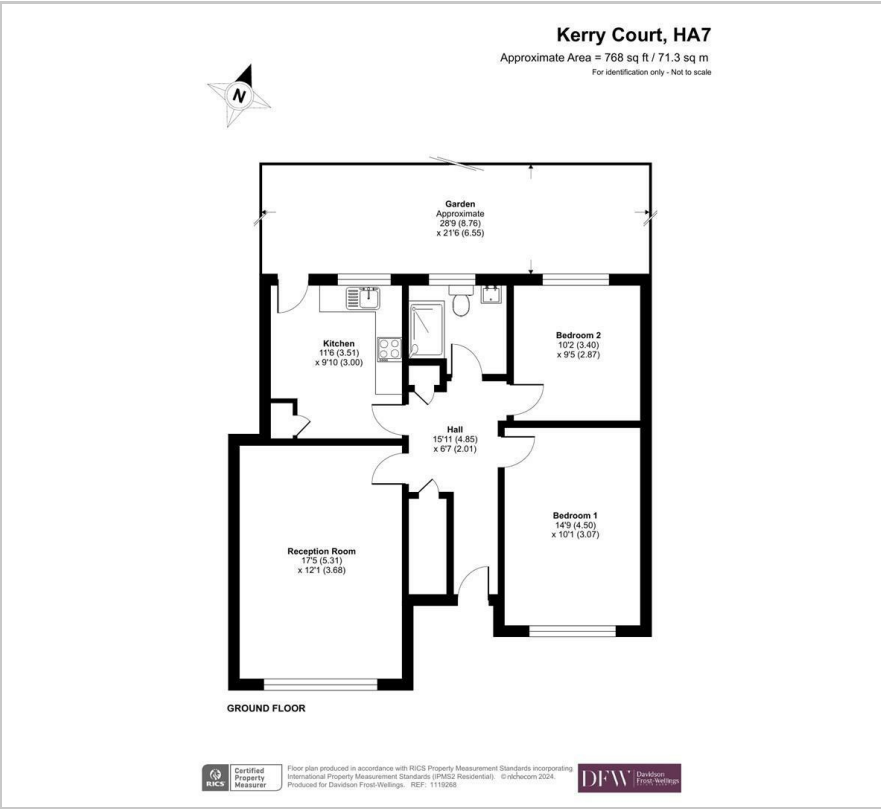
- Two bedroom
- One bathroom
- Ground floor
- Parking at the rear
- Opposite Stanmore Station
- Available 1st February

Viewing

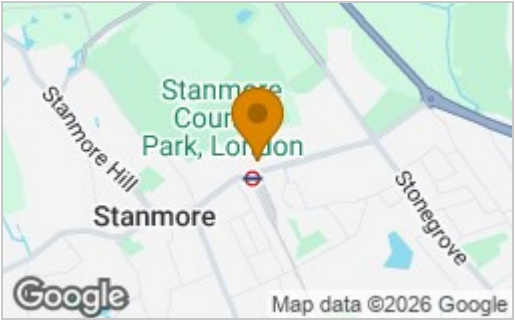
Please contact our Davidson Frost-Wellings Office on 020 8954 8806 if you wish to arrange a viewing appointment for this property or require further information.



Floor Plan



Area Map



Energy Efficiency Rating		
	Current	Potential
Very energy efficient - lower running costs		
(92 plus) A		
(81-91) B		
(69-80) C		
(55-68) D		
(39-54) E		
(21-38) F		
(1-20) G		
Not energy efficient - higher running costs		
	63	71
England & Wales		EU Directive 2002/91/EC



These particulars, whilst believed to be accurate are set out as a general outline only for guidance and do not constitute any part of an offer or contract. Intending purchasers should not rely on them as statements of representation of fact, but must satisfy themselves by inspection or otherwise as to their accuracy. No person in this firms employment has the authority to make or give any representation or warranty in respect of the property.